



APPENDIX D

Trial Pit Logs

C

E

C

C

Trial Pit Logs

Excavated 25 February 2003

TRIAL PIT 1

0.00m-0.16m MADE GROUND. Concrete.

0.16m-0.35m MADE GROUND. Medium to coarse sand and gravel, including brick debris.

0.35m-2.00m MADE GROUND. Slightly orange brown, very gravelly, fine to coarse sand. Gravel is much, medium to coarse subangular to subrounded gravel including brick fragments.

...from 1.00m medium dense.

2.00m-3.00m MADEGROUND. Stiff brown and grey mottled, gravelly clay. Gravel is some ceramic and brick fragments.

Trial Pit completed within this strata.

TRIAL PIT 2

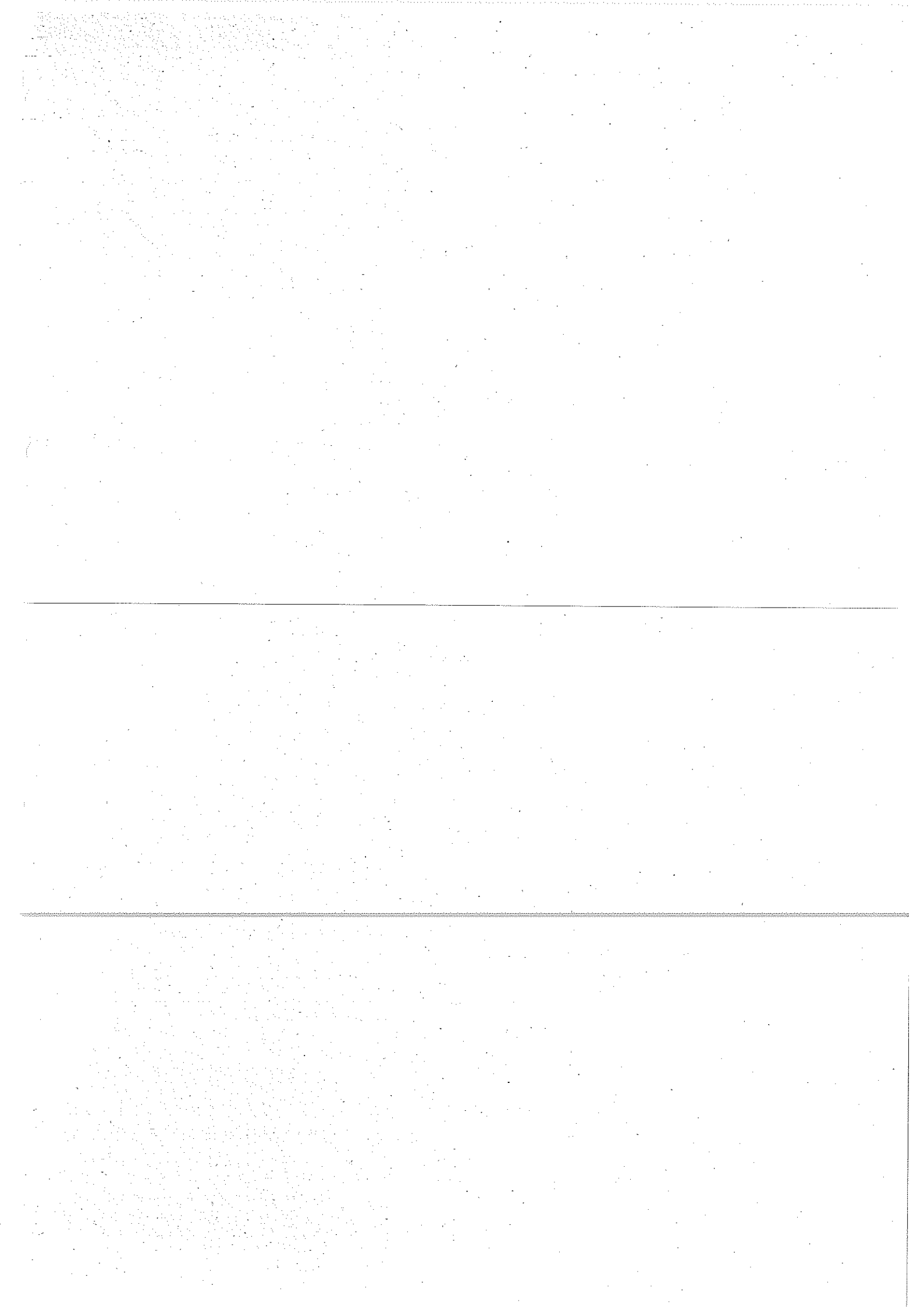
0.00m-0.25m MADEGROUND. Dark brown medium to coarse, very gravelly sand. Gravel is much fine to medium gravel.

0.25m-2.90m Dark brown black, slightly clayey, gravelly SAND. (Possible made ground).

TRIAL PIT 3

0.00m-2.75m MADEGROUND. Soft dark brown black, slightly clayey, very gravelly sand. Gravel is some to much ash, clinker, brick and hardcore fill.





C

C

C

C



APPENDIX E

Chemical Analysis of Soil Samples

C

C

C

C

SOIL RESULTS



Our ref A110187
Your ref JJDS008
Site ref Brockmoor Foundry, Leys Road E3042 2S/2/03

Units														
Method	AN5	g/l Turbidimetric*	mg/kg AN41*	mg/kg AN37	mg/kg AN8	mg/kg AN8	mg/kg AN8	mg/kg AN8	mg/kg AN8	mg/kg AN8	mg/kg AN8	mg/kg AN8	mg/kg AN8	% ANI
Reporting limit	n/a	0.01	1	1	1	5	1	1	1	1	1	1	1	n/a
		H ₂ O sol												
Sample	Description	pH	Sulphate	Phenol	As	Cd	Pb	Fe	Mn	Cu	Ni	Zn	Cr	% Passing 2mm
38061	TP1 0.1 D1	10.8	0.10	NR	3.8	<1	9.8	413	915	33	30	89	25	21.8
38063	TP1 1.1 D3	8.2	0.02	NR	5.3	<1	9.9	96	740	53	25	48	20	76.7
38065	TP2 0.3 D1	7.4	<0.01	NR	11	<1	59	161	3069	33	33	106	30	58.3
38066	TP2 0.5 D2	7.7	<0.01	NR	8.1	<1	20	66	1247	156	25	55	27	86.1
38068	TP3 0.4 D1	7.8	0.76	2.2	3.6	<1	79	90	341	32	15	274	10	45.9
38069	WS1 0.5 D1	7.8	0.05	NR	18	3.9	49	317	5337	5.3	46	99	28	28.1
38070	WS1 1.0 D2	7.3	0.03	NR	10	2.7	10	185	7107	27	53	78	33	38.5
38071	WS4 0.5 D1	7.0	0.07	NR	7	<1	20	84	1675	7.5	32	92	23	51.8
38072	WS4 1.0 D2	6.5	0.04	NR	7.2	<1	50	61	1977	53	47	163	30	53.0
38073	WS5 0.25 D1	9.2	<0.01	NR	11	<1	120	131	688	69	25	219	21	34.6
38075	WS11 0.1 D1	8.1	0.02	NR	13	<1	30	52	869	17	23	91	18	76.6
38076	WS11 1.0 D2	6.5	0.03	NR	<1	<1	10	68	706	39	26	33	27	81.8
38078	WS12A 0.2-0.3 D1	7.2	0.32	<1	43	2.2	162	123	581	183	58	540	52	54.1
38079	WS12A 0.5 D2	8.1	0.63	<1	11	1.1	90	16	224	51	33	917	12	50.3
38081	WS15 0.2 D1	7.1	0.05	<1	4.2	<1	70	14	290	77	17	235	13	55.3
38082	WS15 0.9-1.0 D2	8.0	0.04	<1	13	<1	60	107	704	107	58	378	23	44.4
38083	BH1 0.3 D1	9.6	0.12	<1	<1	<1	59	<1	3293	159	42	133	32	45.2
38084	BH1 0.6 D2	8.0	0.03	<1	7.3	1.4	9.7	<1	8883	22	46	67	26	61.2
38085	BH1 1.0 D3	8.1	0.03	NR	3.3	<1	<5	<1	1254	9.5	38	64	27	83.0
38086	BH2 0.3 D1	7.9	0.29	<1	9.7	<1	80	<1	1964	36	30	182	28	54.5
38088	BH2 1.10 D3	7.8	0.06	<1	13	<1	49	<1	2087	24	37	118	25	47.4
38089	BH2 2.00 D5	7.7	0.07	NR	3.5	<1	9.5	37	945	54	17	52	23	91.3
38094	BH2 4.10 D10	8.2	0.04	NR	NR	NR	NR	NR	NR	NR	NR	NR	NR	49.8
38095	BH3 0.15 D1	7.2	0.02	<1	10	<1	40	56	723	42	28	170	19	61.6
38096	BH3 0.40 D2	7.5	0.01	<1	2.1	<1	29	106	879	15	22	105	18	91.3
38101	BH3 1.20 D7	7.9	0.01	<1	7.5	<1	9.6	332	353	1.2	28	76	18	100.0
38106	BH3 2.80-3.00 B1	7.8	0.03	<1	6.4	<1	9.8	145	409	<1	30	81	18	90.7

Tested at UKAS accredited

oil results, except pH or where otherwise stated, are given in mg/kg air dried soil passing a 2mm sieve.

Water soluble sulphate results in g/L SO4 2:1 water:soil extract.

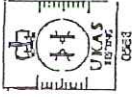
NR = Not Required

○

○

○

○



SPECIATED PAH RESULTS

Our ref A110187
Your ref JJDS008
Site ref Brockmoor Foundry, Leys Road E3042 25/2/03

Method	Units	mg/kg	mg/kg	mg/kg	mg/kg	mg/kg	mg/kg	mg/kg	Soil AN19 mg/kg
Sample	38061	38063	38065	38066	38068	38078	38079		
Description	TP1.0.1.D1	TP1.1.1.D3	TP2.0.3.D1	TP2.0.5.D2	TP3.0.4.D1	WS12A 0.2-0.3.D1	WS12A 0.5.D2		
Naphthalene	<1	<1	<1	<1	<1	13	<1	<1	I
Acenaphthylene	<1	<1	<1	<1	<1	5.5	<1	<1	I
Acenaphthene	<1	<1	<1	<1	<1	7.3	<1	<1	I
Fluorene	<1	<1	<1	<1	<1	9.8	<1	<1	I
Phenanthrene	<1	<1	1.2	<1	<1	96	<1	<1	I
Anthracene	<1	<1	<1	<1	<1	22	<1	<1	I
Fluoranthene	<1	<1	3.1	<1	<1	91	<1	<1	I
Pyrene	<1	<1	3.2	<1	<1	92	<1	<1	I
Benzanthracene/Chrysene	<1	<1	2.6	<1	<1	82	<1	<1	I
Benzo(b)/Benzo(k)fluoranthene	<1	<1	2.6	<1	<1	46	<1	<1	I
Benzo-a-pyrene	<1	<1	3.1	<1	<1	17	<1	<1	I
IPDA	<1	<1	<1	<1	<1	<1	<1	<1	I
Benzo(g,h,i)perylene	<1	<1	<1	<1	<1	<1	<1	<1	I
Total PAH	<10	<10	16	<10	<10	481	<10	<10	10

Soil results are given in mg/kg air dried soil passing a 2mm sieve





Our ref: A110187
Your ref: JHDS008
Site ref: Brockmoor Foundry, Leys Road E3042 25/2/03

Method	Units	mg/kg	mg/kg	mg/kg	mg/kg	mg/kg	mg/kg	mg/kg	mg/kg	mg/kg	mg/kg	mg/kg	mg/kg	mg/kg	mg/kg	mg/kg	mg/kg	mg/kg	mg/kg	Soil	Reporting limit
		38081	38082	38084	38085	38086	38088	38089	38095	38096	38101									AN19	mg/kg
		WS15 0.2 D1	WS15 0.9-1.0	BH1 0.6 D2	BH11.0 D3	BH2 0.3 D1	BH2 1.1.1.0 D3	BH2 2.00 D5	BH3 0.15 D1	BH3 0.40 D2	BH3 1.20 D7										
Description		<1	<1	<1	<1	<1	<1	<1	<1	<1	<1	<1	<1	<1	<1	<1	<1	<1	<1	<1	<1
Naphthalene		<1	<1	<1	<1	<1	<1	<1	<1	<1	<1	<1	<1	<1	<1	<1	<1	<1	<1	<1	<1
Acenaphthylene		<1	<1	<1	<1	<1	<1	<1	<1	<1	<1	<1	<1	<1	<1	<1	<1	<1	<1	<1	<1
Acenaphthene		<1	<1	<1	<1	<1	<1	<1	<1	<1	<1	<1	<1	<1	<1	<1	<1	<1	<1	<1	<1
Fluorene		<1	<1	<1	<1	<1	<1	<1	<1	<1	<1	<1	<1	<1	<1	<1	<1	<1	<1	<1	<1
Phenanthrene		<1	<1	<1	<1	9.8	<1	<1	<1	<1	<1	<1	<1	<1	<1	<1	<1	<1	<1	<1	<1
Anthracene		<1	<1	<1	<1	2.1	<1	<1	<1	<1	<1	<1	<1	<1	<1	<1	<1	<1	<1	<1	<1
Fluoranthene		<1	<1	<1	<1	11	<1	<1	<1	<1	<1	<1	<1	<1	<1	<1	<1	<1	<1	<1	<1
Pyrene		<1	<1	<1	<1	12	<1	<1	<1	<1	<1	<1	<1	<1	<1	<1	<1	<1	<1	<1	<1
Benzo(a)anthracene/Chrysene		<1	<1	<1	<1	7.7	<1	<1	<1	<1	<1	<1	<1	<1	<1	<1	<1	<1	<1	<1	<1
Benzo(b)fluoranthene		<1	<1	<1	<1	7.9	<1	<1	<1	<1	<1	<1	<1	<1	<1	<1	<1	<1	<1	<1	<1
Benzo(a)pyrene		<1	<1	<1	<1	2.9	<1	<1	<1	<1	<1	<1	<1	<1	<1	<1	<1	<1	<1	<1	<1
IPDA		<1	<1	<1	<1	<1	<1	<1	<1	<1	<1	<1	<1	<1	<1	<1	<1	<1	<1	<1	<1
Benzo(g,h,i)perylene		<1	<1	<1	<1	<1	<1	<1	<1	<1	<1	<1	<1	<1	<1	<1	<1	<1	<1	<1	<1
Total PAH		<10	<10	<10	<10	53	<10	<10	<10	<10	<10	<10	<10	<10	<10	<10	<10	<10	<10	<10	10

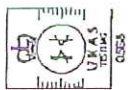
Soil results are given in mg/kg air dried soil passing a 2mm sieve



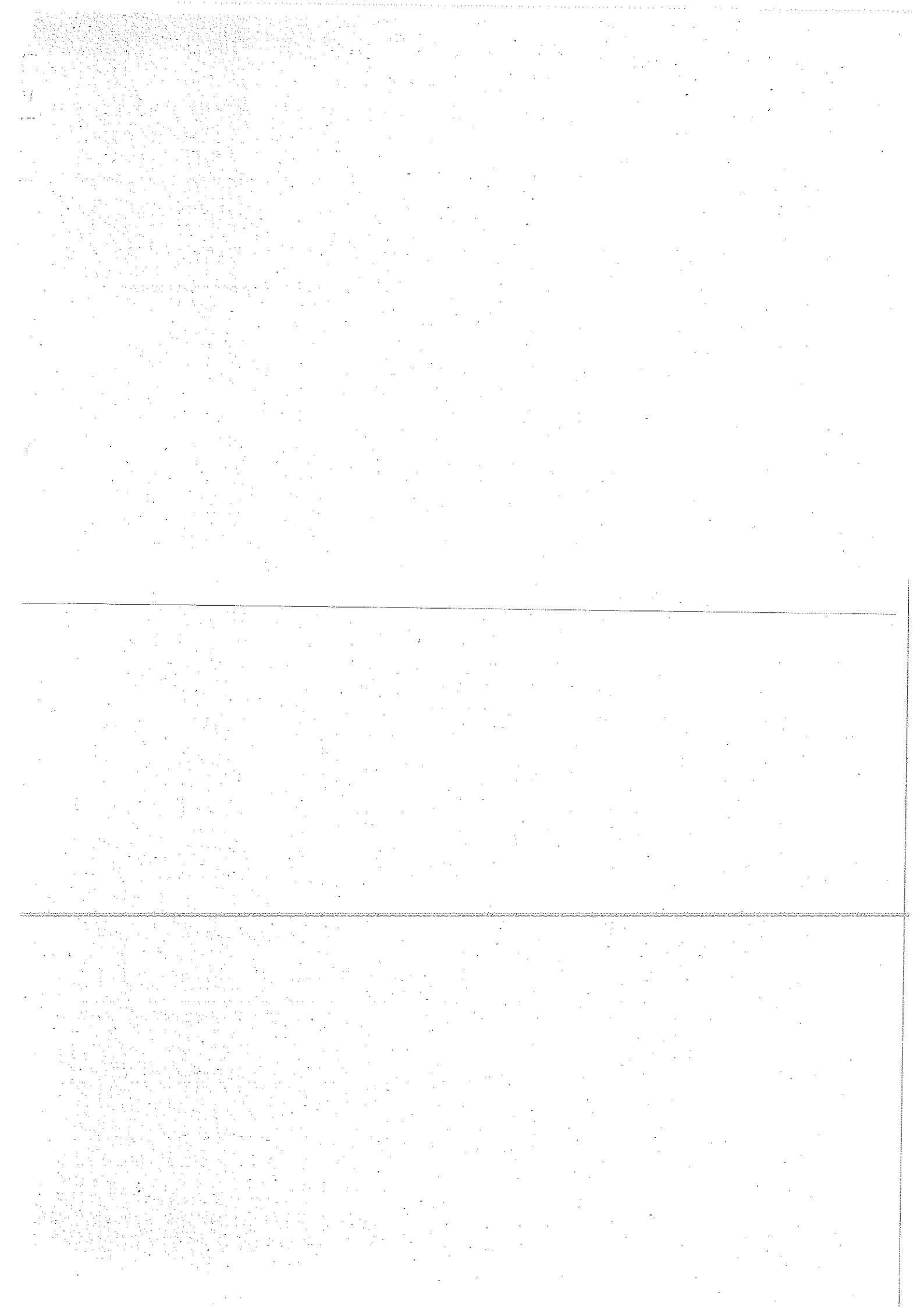
SPECIATED TPH RESULTS

Our ref AI10187
Your ref JDS008
Site ref Brocknoor Foundry, Leys Road E3042 257/03

Sample Description	GRO Range		DRO Range		MRO Range		Total Petroleum Hydrocarbons		Carbon Range		Possible Fuel Type
	mg/kg AN34 10	mg/kg AN34 10	mg/kg AN34 10	mg/kg AN34 10	mg/kg AN34 10	mg/kg AN34 10	mg/kg AN34 10	mg/kg AN34 10	n/a AN34 n/a	n/a AN34 n/a	
38061 TP1 0.1 D1	<10	<10	<10	<10	<10	<10	<10	<10	n/a	n/a	n/a
38063 TP1 1.1 D3	<10	<10	<10	<10	<10	<10	<10	<10	n/a	n/a	n/a
38065 TP2 0.3 D1	<10	<10	<10	<10	<10	<10	<10	<10	n/a	n/a	n/a
38066 TP2 0.5 D2	<10	<10	<10	<10	<10	<10	<10	<10	n/a	n/a	n/a
38068 TP3 0.4 D1	<10	<10	<10	<10	<10	<10	<10	<10	n/a	n/a	n/a
38069 WS1 0.5 D1	<10	<10	<10	<10	<10	<10	<10	<10	n/a	n/a	n/a
38070 WS1 1.0 D2	<10	<10	<10	<10	<10	<10	<10	<10	n/a	n/a	n/a
38071 WS4 0.5 D1	<10	<10	<10	<10	<10	<10	<10	<10	n/a	n/a	n/a
38072 WS4 1.0 D2	<10	<10	2927	<10	82	<10	<10	<10	n/a	n/a	n/a
38078 WS12A 0.2-0.3 D1	<10	<10	<10	<10	<10	<10	<10	<10	C14-C36	Mineral oil	n/a
38079 WS12A 0.5 D2	Insufficient Sample	Insufficient Sample	Insufficient Sample	Insufficient Sample	Insufficient Sample	Insufficient Sample	Insufficient Sample	Insufficient Sample	n/a	Insufficient Sample	n/a
38081 WS15 0.2 D1	<10	<10	<10	<10	<10	<10	<10	<10	n/a	n/a	n/a
38082 WS15 0.9-1.0 D2	<10	<10	<10	<10	<10	<10	<10	<10	n/a	n/a	n/a
38083 BH1 0.3 D1	<10	<10	<10	<10	<10	<10	<10	<10	n/a	n/a	n/a
38084 BH1 0.6 D2	<10	<10	<10	<10	<10	<10	<10	<10	n/a	n/a	n/a
38085 BH1 1.0 D3	<10	<10	<10	<10	<10	<10	<10	<10	n/a	n/a	n/a
38086 BH2 0.3 D1	<10	<10	<10	<10	<10	<10	<10	<10	n/a	n/a	n/a
38088 BH2 1.0 D3	<10	<10	<10	<10	<10	<10	<10	<10	n/a	n/a	n/a
38089 BH2 2.00 D5	<10	<10	25	<10	<10	<10	<10	<10	n/a	n/a	n/a
38094 BH2 4.40 D10	<10	<10	<10	<10	<10	<10	<10	<10	C22-C30	Weathered diesel	n/a
38095 BH3 0.15 D1	<10	<10	<10	<10	<10	<10	<10	<10	n/a	n/a	n/a
38096 BH3 0.40 D2	<10	<10	<10	<10	<10	<10	<10	<10	n/a	n/a	n/a
38101 BH3 1.20 D7	<10	<10	<10	<10	<10	<10	<10	<10	n/a	n/a	n/a
38106 BH3 2.80-3.00 B1	<10	<10	<10	<10	<10	<10	<10	<10	n/a	n/a	n/a







C

C

C

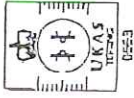
C



APPENDIX F

Chemical Analysis of Water Samples





WATER RESULTS

Our ref A110268
Your ref N/A
Site ref Brockmoor Foundry, Leys Road CS003

Units	Method	Reporting limit	As	Cd	Pb	Cu	Ni	Zn	Cr	Fe	Mg	Mn
mg/l	AN37	0.001	<0.001	<0.005	<0.01	<0.01	<0.01	<0.01	<0.01	<0.01	0.32	0.32
mg/l	AN39*	0.005	<0.005	0.05	<0.01	<0.01	<0.01	0.01	<0.01	<0.01	<0.01	<0.01
Turbidimetric*	AN5	5										
pH												
Sulphate												
BH1			41									
BH2			145									
BH3			114									

* Test not UKAS accredited

C

C

C

(



SPECIATED PAH RESULTS

Our ref A110268
Your ref N/A
Site ref Brockmoor Foundry, Leys Road CS003

Method	Units	µg/L	µg/L	µg/L	Water AN19* µg/L
Sample Description	38476	BHI	38477	38478	
Naphthalene	0.12		0.06	0.03	0.02
Acenaphthylene	0.06		0.06	<0.02	0.02
Acenaphthrene	0.04		<0.02	0.39	0.02
Fluorene	<0.02		<0.02	<0.02	0.02
Phenanthrene	0.06		<0.02	0.04	0.02
Anthracene	<0.02		<0.02	<0.02	0.02
Fluoranthene	<0.02		<0.02	<0.02	0.02
Pyrene	<0.02		<0.02	<0.02	0.02
Benzantracene	<0.02		<0.02	<0.02	0.02
Chrysene	<0.02		<0.02	<0.02	0.02
Benzo(b)fluoranthene	<0.02		<0.02	<0.02	0.02
Benzo-a-pyrene	<0.02		<0.02	<0.02	0.02
Indeno 1,2,3(CD)pyrene	<0.02		<0.02	<0.02	0.02
1,2,5,6 Dibenzantracene	<0.02		<0.02	<0.02	0.02
Benzo(g,h,i)perylene	<0.02		<0.02	<0.02	0.02
Total PAH	0.28		0.12	0.46	0.01
Phenol	<0.5		<0.5	<0.5	<0.5

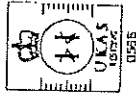
* Test not UKAS accredited

(

(

(

(



SPECIATED TPH RESULTS

Our ref A110268
Your ref N/A
Site ref Brockmoor Foundry, Leys Road CS003

Units (water) mg/l
Method AN34/I*
Reporting limit (water) 0.01

n/a
AN34/I*
0.01
n/a
AN34/I*
n/a

Sample Description	GRO Range		DRO Range		MRO Range		Total Petroleum Hydrocarbons		Carbon Range		Possible Fuel Type
	Hydrocarbons	Hydrocarbons	Hydrocarbons	Hydrocarbons	Hydrocarbons	Hydrocarbons	Hydrocarbons	Hydrocarbons	Carbon Range	Carbon Range	
38476 BH1	0.01	0.01	0.31	0.02	0.02	0.35	C10-C32	Mineral oil			
38477 BH2	<0.01	0.57	0.37	0.94	C18-C32	Mineral oil					
38478 BH3	<0.01	<0.01	<0.01	<0.01	n/a	n/a					

* Test not UKAS accredited

C

C

C

C